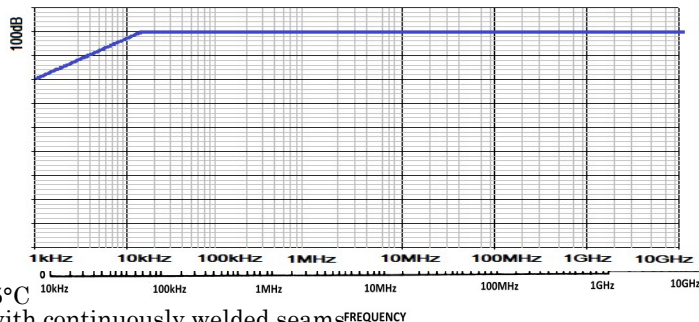
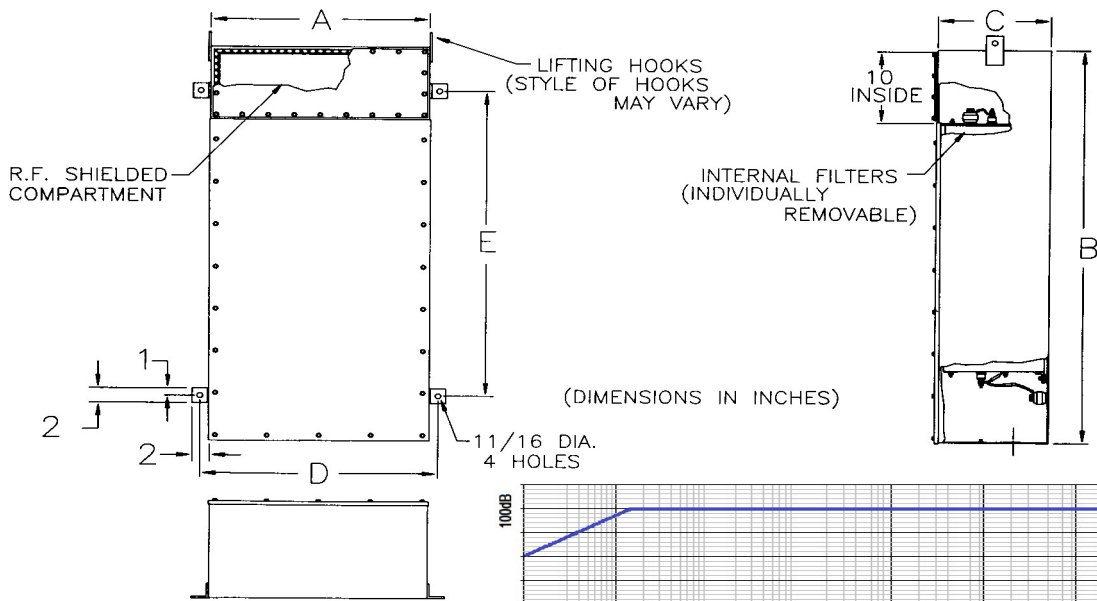




**UL Listed Facility Filter Cabinets
for Tempest Application 100dB from 14kHz to 18GHz
Per UL Safety Specification 1283**



NOTES:

- Filters are listed per UL specification #1283
- Temperature Range: Operating -55°C to +85°C
- Enclosures are made from cold rolled steel with continuously welded seams
- Filter ground path connecting surfaces shall be tin plated or stainless steel
- Conduit hubs or clearance holes may be provided if specified when ordering
- Each phase filter is individually removable
- Internal filters are filed with a non-flammable impregnant and hermetically sealed
- Legs for floor mounting may be provided if specified when ordering
- Filters for 300AMP and up have 6" x 2" mounting U-Channel
- Filters are meet MIL-STD-220C requirements

Part Number	Current Rating (AMP)	Voltage Rating		Frequency Rating (Hz)	Dimensions (INCHES)					Weight Approx. (LBS)
		LG / LL VAC	VDC		A±.060	B±.060	C±.060	D±.060	E±.060	
FCULX-4 X 30E2	4 x 30	277/480	600	60	28	38	6	30	26	220
FCULX-4 X 60E2	4 x 60	277/480	600	60	28	41	8	30	29	315
FCULX-4 X 100E2	4 x 100	277/480	600	60	38	48	10	40	48	520
FCULX-4 X 225E2	4 x 225	277/480	600	60	28	60	16	30	48	750
FCULX-4 X 250E2	4 x 250	277/480	600	60	28	54	16	30	42	750
FCULX-4 X 300E2	4 x 300	277/480	600	60	60	60	16	63	36	850
FCULX-4 X 400E2	4 x 400	277/480	600	60	60	60	16	63	36	975
FCULX-4 X 500E2	4 x 500	277/480	600	60	60	84	16	63	44	1075
FCULX-4 X 600E2	4 x 600	277/480	600	60	45	84	34	48	44	1600
FCULX-4 X 800E2	4 x 800	277/480	600	60	60	84	34	63	44	2400
FCULX-4 X 1000E2	4 x 1000	277/480	600	60	60	84	34	63	44	2500
FCULX-4 X 1200E2	4 x 1200	277/480	600	60	96	84	34	99	44	2750
FCULX-4 X 1500E2	4 x 1500	277/480	600	60	96	84	34	99	44	2900

*All Filter Cabinets are also available in 3 lines and 4 lines configuration
 **All Filter Cabinets attenuation available in 14kHz—40GHz configuration





*Series FCULX - Individual Filter Elements for Tempest
Application 100dB from 14kHz to 18GHz
Per UL Safety Specification 1283*

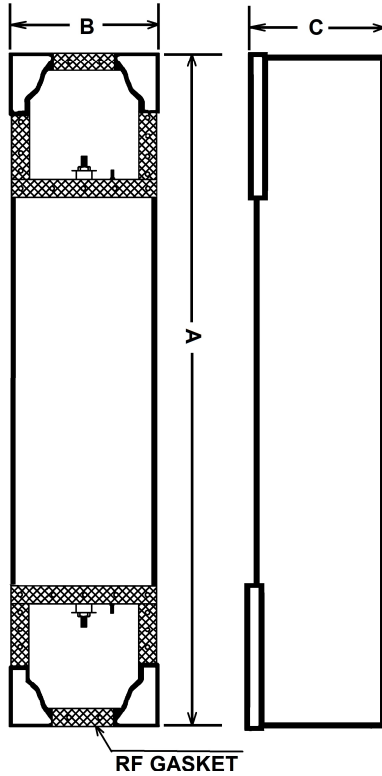


FIG. 1

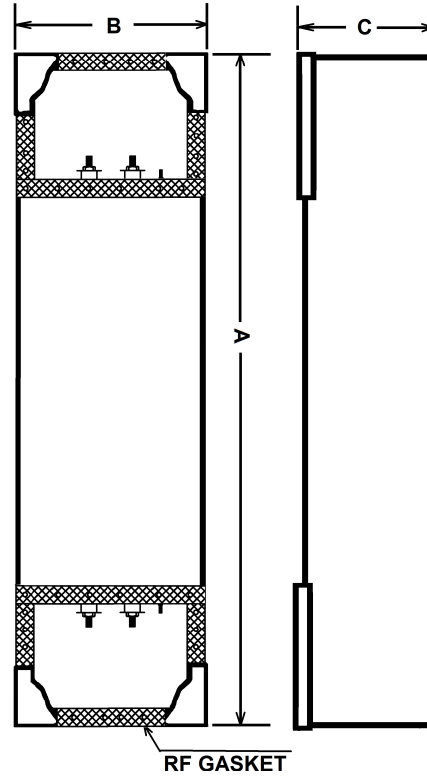


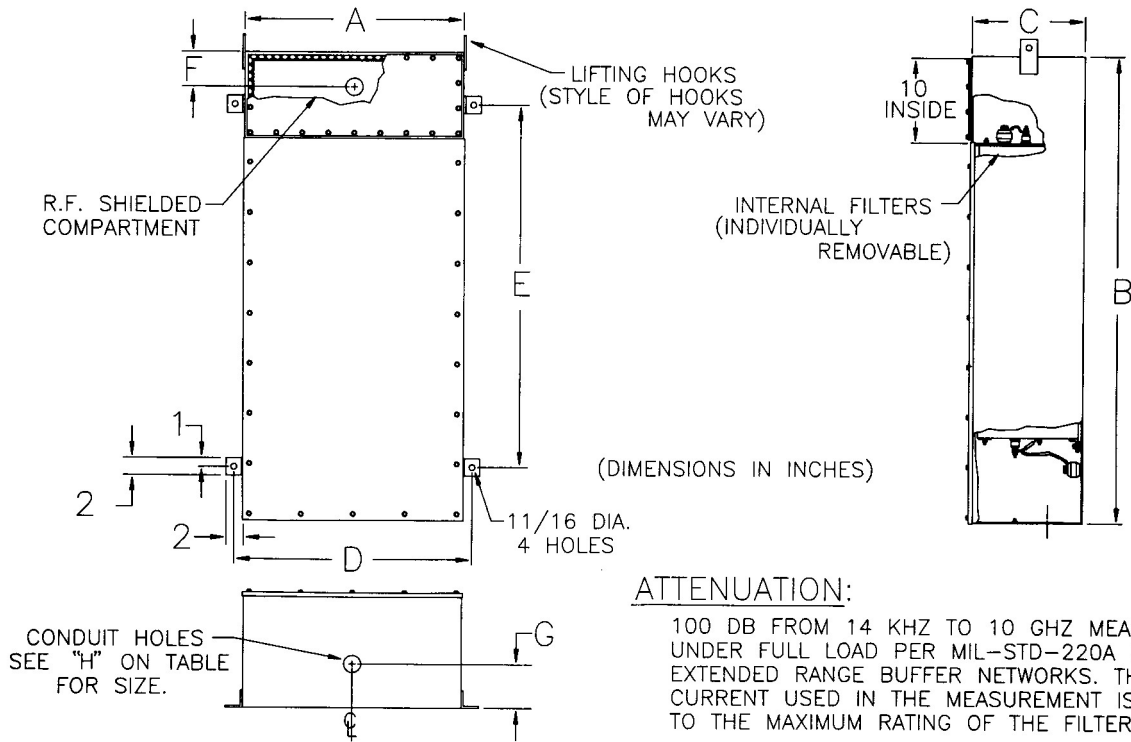
FIG. 2

PART NO	CURRENT (AMP)	VOLTAGE (VAC)	FREQ (HZ)	WIRE SIZE	FIGURE No	DIMENSIONS (INCH)			INSERTION LOSS (DB)				
						A	B	C	14kHz	100kHz Z	10MH Z	1GHz	18GHz
FCULX-1x30-E2	1 x 30	277	0-60	#10	1	33	6	4.5	100	100	100	100	100
FCULX-2x30-E2	2 x 30	277	0-60	#10	2	33	12	4.5	100	100	100	100	100
FCULX-1x60-E2	1 x 60	277	0-60	#10	1	33	6	4.5	100	100	100	100	100
FCULX-2x60-E2	2 x 60	277	0-60	#10	2	33	12	4.5	100	100	100	100	100
FCULX-1x100-E2	1 x 100	277	0-60	#2	1	41	8.5	6	100	100	100	100	100
FCULX-2x100-E2	2 x 100	277	0-60	#2	2	41	17	6	100	100	100	100	100
FCULX-1x200-E2	1 x 200	277	0-60	250MCM	1	41	14	6	100	100	100	100	100
FCULX-1x250-E2	1 x 250	277	0-60	250MCM	1	42	14	6	100	100	100	100	100





UL Listed Facility Filters Per UL Safety Specification 1283



PART NUMBER	CURRENT (AMPS)	FREQ (HZ)	VOLTAGE RATING		DIMENSIONS (INCHES)								WEIGHT APPROX.(lbs.)
			VAC	VDC	A	B	C	D	E	F	G	H	
F000-XUL-(2) 2x5	4x5	60	277	600	14.00	40.00	18.00	16.25	28.0	3.00	2.0	.88	210
F000-XUL-(2) 2x5-400 HZ	4x5	400	277	600	14.00	40.00	18.00	16.25	28.0	3.00	2.0	.88	210
F000-XUL-600 VAC-(2)	4x5	60	600	1,000	14.00	40.00	18.00	16.25	28.0	3.00	2.0	.88	210
F000-XUL-600VAC-(2)	4x5	400	600	1,000	14.00	40.00	18.00	16.25	28.0	3.00	2.0	.88	210
F000-XUL-(2) 2x30	4x30	60	277	600	14.00	52.00	18.00	16.25	40.0	3.00	2.0	1.38	315
F000-XUL-(2) 2x30-400	4x30	400	277	600	14.00	52.00	18.00	16.25	40.0	3.00	2.0	1.38	315
F000-XUL-600VAC-(2)	4x30	60	600	1,000	14.00	52.00	18.00	16.25	40.0	3.00	2.0	1.38	315
F000-XUL-600 VAC-(2)	4x30	400	600	1,000	14.00	52.00	18.00	16.25	40.0	3.00	2.0	1.38	315
F000-XUL-4x100	4x100	60	277	600	25.00	65.00	15.00	27.25	53.0	4.00	5.0	2.00	570
F000-XUL-4x100-400 HZ	4x100	400	277	600	25.00	65.00	15.00	27.25	53.0	4.00	5.0	2.00	570
F000-XUL-600VAC-4x100	4x100	60	600	1,000	25.00	65.00	15.00	27.25	53.0	4.00	5.0	2.00	570
F000-XUL-600 VAC-4x1	4x100	400	600	1,000	25.00	65.00	15.00	27.25	53.0	4.00	5.0	2.00	570
F000-XUL-4x225	4x225	60	277	600	30.00	65.00	27.00	32.25	53.0	6.00	5.0	3.00	1,000
F000-XUL-4x225-400 HZ	4x225	400	277	600	30.00	65.00	27.00	32.25	53.0	6.00	5.0	3.00	1,000
F000-XUL-600 VAC-4x225	4x225	60	600	1,000	30.00	65.00	27.00	32.25	53.0	6.00	5.0	3.00	1,000
F000-XUL-600VAC-	4x225	400	600	1,000	30.00	65.00	27.00	32.25	53.0	6.00	5.0	3.00	1,000

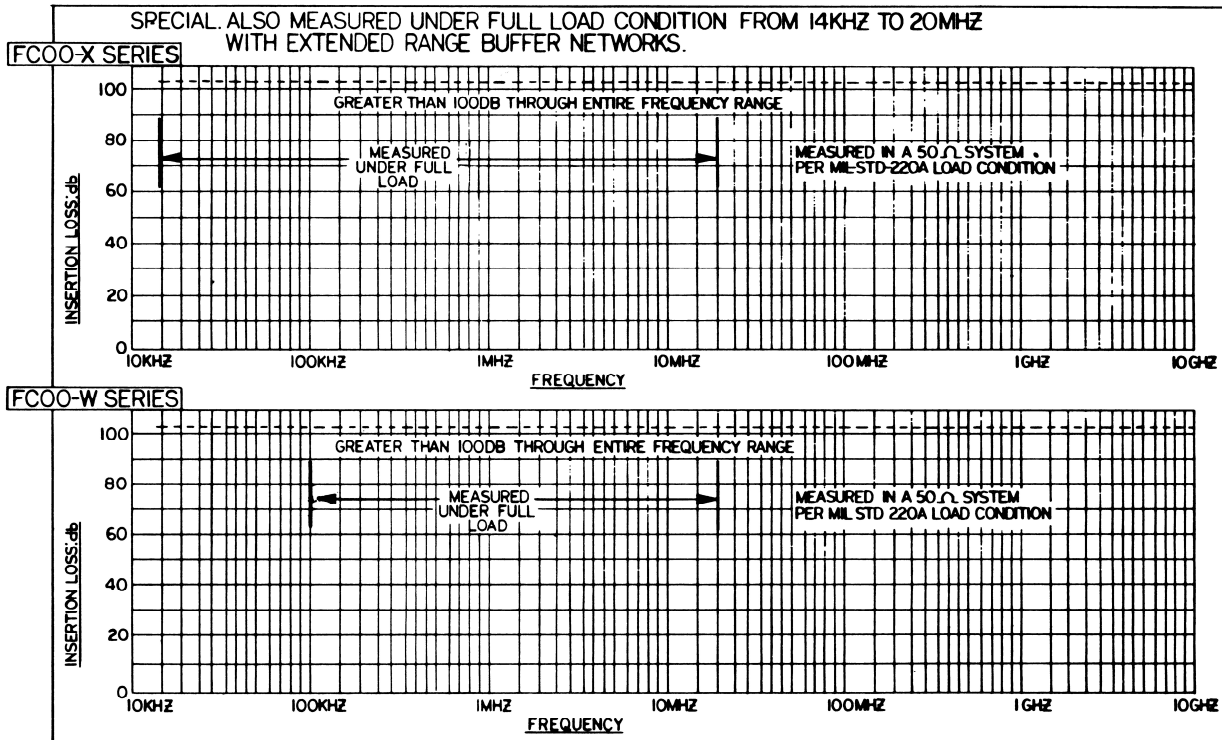
NOTES:

1. Individual, UL listed, replacement filters are available
Example: "F000-XUL-4x100-400HZ" all dimensions are the same as 60HZ units
2. Operating temperature range: -55°C to + 85°C
3. 100 & 225 AMP assemblies are also available for 3 phase 3 wire systems





*Filters for RF Power Line
Assembled Cabinet
for shielded rooms and secure areas (Tempest Application)*



SPECIFICATIONS

GENERAL

The filter herein described shall be designed for filtering of radio frequency interference and to meet the requirements of Military Specifications MIL-F-15733, where applicable. These filters may be used with other electrical devices to enable the devices to meet the requirements of MIL-I-26600, MIL-I-16910, MIL-I-6181, MIL-I-11748, MIL-STO-461, 462, 463, FED-STD-222, and FCC Specification Part 18. Also, DCA specifications and others developed for special equipment and systems applications.

ELECTRICAL

CURRENT RATING: The filters shall be capable of carrying full-rated current with a heat rise not exceeding 25°C above ambient temperature. The filters shall be capable of withstanding 150% of rated current overload for 15 minutes without any deterioration.

VOLTAGE: The filters shall be capable of operating continuously at full-rated voltage and of withstanding an over-voltage test of twice the rated voltage for one minute. Maximum voltage drop shall not exceed 2 volts when measured in accordance with MIL-F-15733. Maximum operating temperature: 85°C.

MECHANICAL

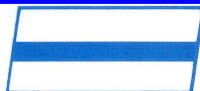
CASE: The inner cases of each filter shall be made of C.R.S. 16 GA. min. Each phase filter shall be individually replaceable. All internal filters are hermetically sealed.

TERMINALS: The terminals shall be made of high temperature alumina ceramic and shall be leak proofed. The ceramic terminal shall have a flexible insulated lead, one end of which is permanently attached to the terminal, the other end in a permanently affixed lug mounted on .7 approved flame-retardant stand-off insulator secured with a suitable screw. All connections shall be made only at the stand-offs.

IMPREGNANT: Where applicable the impregnant shall be non-flammable as classified by U.L. and MIL-F-15733.

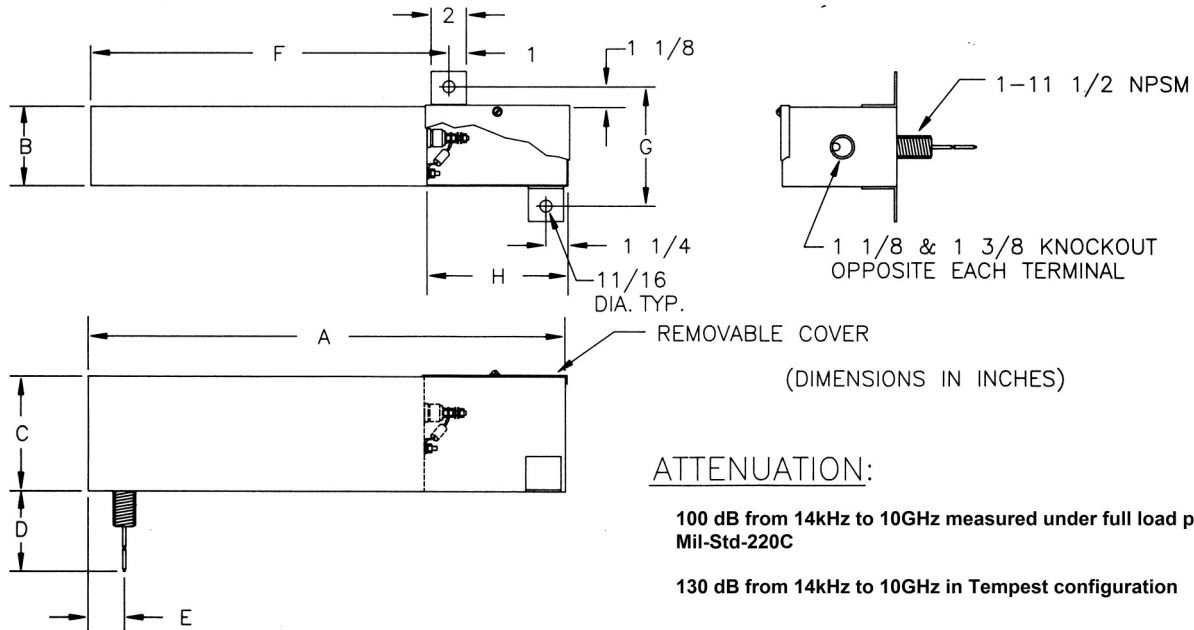
CONSTRUCTION: Input and output terminals shall be completely enclosed in RF shielded compartments. Covers on the input and output RF shielded compartments shall be held down with screws. Gasketing shall be used between the cover and the inside fitting flange to maintain RF integrity. Internal components shall be mounted and fixed to prevent damage when subjected to applicable shock and vibration tests.

FINISH: All filter cases shall be made rust proof by painting over primer. All unfinished grounding surfaces are protected by suitable plating.





UL Listed Facility Filters Per UL Safety Specification 1283



PART NO	CURRENT RATING (AMP)	VOLTAGE RATING (VAC)	FREQ RATING (HZ)	WIRE SIZE	DIMENSIONS (INCHES)							
					A	B	C	D	E	F	G	H
FC-962	2 x 5	277	0-60	#10	24	7	4	36	1.75	19.25	9.25	6
FC-962A	2 x 5	277	0-400	#10	24	7	4	36	1.75	19.25	9.25	6
FC-1407	2 x 5	600	0-60	#10	24	8	7	36	1.75	19.25	10.25	6
FC-1407A	2 x 5	600	0-400	#10	24	8	7	36	1.75	19.25	10.25	6
FC-943	2 x 30	277	0-60	#10	24	7	7	36	1.75	19.25	9.25	6
FC-943A	2 x 30	277	0-400	#10	24	7	7	36	1.75	19.25	9.25	6
FC-1387	2 x 30	600	0-60	#10	24	8	7	36	1.75	19.25	10.25	6
FC-1387A	2 x 30	600	0-400	#10	24	8	7	36	1.75	19.25	10.25	6
FC-944	100	277	0-60	#2	34	4.50	6.50	36	2	26.25	6.75	9
FC-944A	100	277	0-400	#2	34	4.50	6.50	36	2	26.25	6.75	9
FC-1197	100	600	0-60	#2	34	8	6.50	36	2	26.25	10.25	9
IEC-1197A	100	600	0-400	#2	34	8	6.50	36	2	26.25	10.25	9
FC-945	225	277	0-60	4/0	41	8	8	36	2	27.25	10.25	15
FC-945A	225	277	0-400	4/0	41	8	8	36	2	27.25	10.25	15
FC-1198	225	600	0-60	4/0	41	8	8	36	2	27.25	10.25	15
FC-1198A	225	600	0-400	4/0	41	8	8	36	2	27.25	10.25	15

1. Each field wiring terminal and ground stud is provided with a set screw type lug
2. Each circuit is provided with discharge resistors
3. Each filter available in tempest configuration
4. Each filter is provided with non-flammable impregnant as classified by U.L. and MIL-F-15733

FIL-COIL, FC INC—THE FIRST
COMPANY TO BE LISTED AS MANUFACTURER OF
FACILITY FILTERS PER UL SAFETY SPECIFICATION #1283

